



FOUR HORSEMEN OLD SCHOOL MAGIC



FOURHORSEMENMAGIC.COM



FACEBOOK.COM/GROUPS/FOURHORSEMENMTG



FOUR HORSEMEN OLD SCHOOL MAGIC



T22 SUMMER LEAGUE - FINALS

T22



FOURHORSEMENMAGIC.COM



FACEBOOK.COM/GROUPS/FOURHORSEMENMTG



FOUR HORSEMEN OLD SCHOOL MAGIC



FINALS LIVE SEP 13 9 PM EST



BRIAN WEISSMAN



JOHN EKLEBERRY

HOSTS & LIVE COMMENTATORS

T22

LAND TAX UNRESTRICTED

VS

RUG ARABIAN AGGRO





FOUR HORSEMEN OLD SCHOOL MAGIC



FOURHORSEMENMAGIC.COM

FACEBOOK.COM/GROUPS/FOURHORSEMENMTG



FOUR HORSEMEN OLD SCHOOL MAGIC



T22 SUMMER LEAGUE JUL 5 - AUG 31

T22



FOURHORSEMENMAGIC.COM



T22

FACEBOOK.COM/GROUPS/FOURHORSEMENMTG



FOUR HORSEMEN OLD SCHOOL MAGIC



T22 SUMMER LEAGUE JUL 5 - AUG 31

REGISTRATION	WEEK 1	WEEK 2	WEEK 3	WEEK 4	WEEK 5	WEEK 6	WEEK 7	WEEK 8
JUN 9 - JUL 4	JUL 5 - JUL 12	JUL 13 - JUL 19	JUL 20 - JUL 26	JUL 27 - AUG 2	AUG 3 - AUG 9	AUG 10 - AUG 16	AUG 16 - AUG 23	SEP 1
REGISTER @ TOLARIA.APP	GROUP MATCHES	GROUP MATCHES	GROUP MATCHES	GROUP MATCHES	GROUP MATCHES	TOP 8 QUARTER FINALS	SEMI-FINALS & FINALS	FINALS LIVE IN- PERSON

T22



T22

FOURHORSEMENMAGIC.COM

FACEBOOK.COM/GROUPS/FOURHORSEMENMTG



FOUR HORSEMEN OLD SCHOOL MAGIC



FREE PLAYMAT FIRST
PLACE PRIZE!

SEMI FINALS PRIZES!

SETS & LANDS	
RESTRICTED (17-200)	
BANNED	

T22

SUMMER LEAGUE: JUL 5 - AUG 31

T22

FOURHORSEMENMAGIC.COM

FACEBOOK.COM/GROUPS/FOURHORSEMENMTG





FOUR HORSEMEN OLD SCHOOL MAGIC



Oubliette 1 2 3



Enchantment

Select a creature in play when Oubliette is cast. That creature is considered out of play as long as Oubliette is in play. Hence the creature cannot be the target of spells and cannot receive damage, use special powers, attack, or defend. All counters and enchantments on the creature remain but are also out of play. If Oubliette is removed, creature returns to play tapped.

Illus. © Alex Maleev

Fallen Angel 2 3 3



Illus. © 1994 Winton Maddocks

Fallen Angel 2 3 3



Illus. © 1994 Clyde Caldwell

Sorceress Queen 1 2 3



Summon Sorceress

Tap to make another creature 0/2 until end of turn. Treat this exactly as if the numbers in the lower right of the target card were 0/2. All special characteristics and enchantments on the creature are unaffected.

Illus. © Alex Maleev & Co.

Tetravite



Token

Flying
Counts as an artifact creature. Tetravite cannot have enchantments played on it.

Illus. Mark Tedin
©1993-1998 Wizards of the Coast, Inc.

Rukh



Token

Flying

JOHN EKLEBERRY

Illus. Christopher Rush
©1993-1998 Wizards of the Coast, Inc.

Fallen Angel 2 3 3



Summon Angel

Flying
Sacrifice a creature to give Fallen Angel +2/+1 until end of turn.

Illus. © 1994 Clyde Caldwell

Fallen Angel 2 3 3



Illus. © 1994 Richard Kane-Ferguson

Fallen Angel 2 3 3



Summon Angel

Flying
Sacrifice a creature to give Fallen Angel +2/+1 until end of turn.

Illus. © 1994 Richard Kane-Ferguson

Imprison



Enchant Creature

Pay 1 each time target creature attempts to attack, block, or tap. That action is prevented and the creature becomes tapped. Destroy enchantment if mana is not paid.

Illus. © 1994 John Bolton

The Abyss 3 3 3



Enchant World

All players bury one target non-artifact creature under their control, if they have any, during their upkeep.
"An immense river of oblivion is sweeping us away into a nameless abyss." —Ernest Renan, Souvenirs d'Enfance et de Jeunesse

Illus. © 1994 P.P. Venturi

Islands



Land

Tap to add 1 to your mana pool.

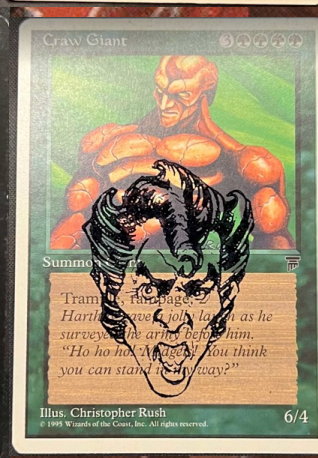
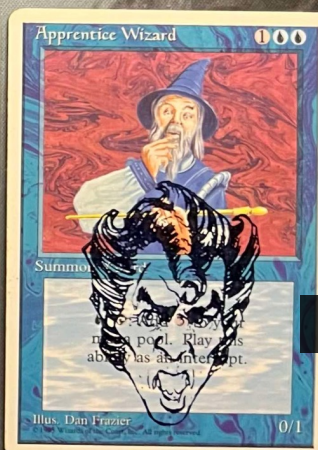
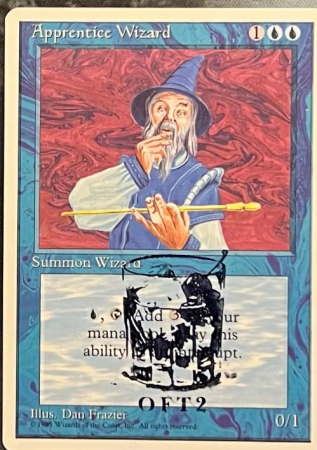
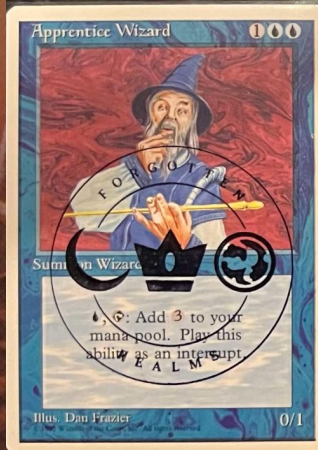
Illus. © Mark Poole



FOUR HORSEMEN OLD SCHOOL MAGIC



JOHN EKLEBERRY





FOUR HORSEMEN OLD SCHOOL MAGIC





FOUR HORSEMEN OLD SCHOOL MAGIC



T22 SUMMER LEAGUE OVERVIEW

T22



T22



FOURHORSEMENMAGIC.COM

FACEBOOK.COM/GROUPS/FOURHORSEMENMTG



FOURHORSEMENMAGIC.COM



FACEBOOK.COM/GROUPS/FOURHORSEMENMTG



FOUR HORSEMEN OLD SCHOOL MAGIC

T22 SUMMER LEAGUE BLOG

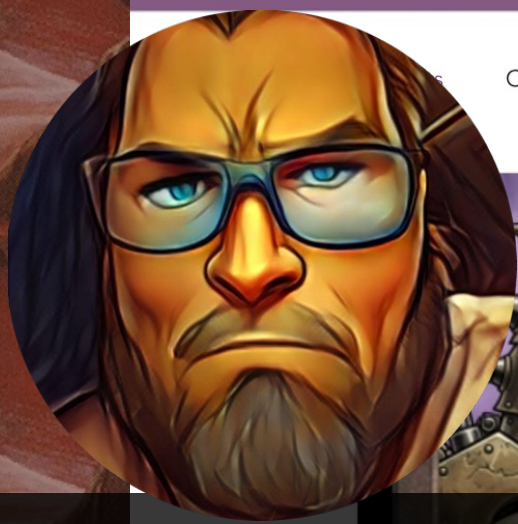
fourhorsemenmagic.com/blog



- Home
- Shop
- Decks
- Play
- Calendar
- Rules
- Current Tourney
- Past Tournies
- NicheCon
- Prizes
- Blog
- YouTube
- Facebook
- More

[> Register for Our Next Tournament](#)

Old School Magic Stories



LUKE RAVEN



Creature Construct
This creature gets +1/+0 until end of turn.



Luke Raven
Aug 20 • 12 min read

FOUR HORSE SCHOOL MAGIC TOURNAMENT 22

T22 SUMMER LEAGUE GAME PLAY SCHEDULE
AUG 31, 2025 - Week 1 to Week 6: JUL 5 - AUG 16 |
Group Matches - Week 7: AUG 16 - AUG 23

75 views 1 comment

3 ❤️



JIM RICE



FOUR HORSEMEN OLD SCHOOL MAGIC



T22 SUMMER LEAGUE OVERVIEW

Summer League Deck Brewing:

- Players build at least one Four Horsemen Decks compliant with the standard 4HM Banned & Restricted list
- Four Horsemen Rules Document With Banned & Restricted List - <https://bit.ly/4HMRULES>
- Card Pool: Arabian Nights, Antiquities, Legends, The Dark, Basic Lands & Dual Lands
- 60 Card Minimum Deck Size, No Maximum, 15 Card Sideboard Allowed
- Proxies & Reprints are Allowed to make this format accessible to all

Casual Fun Summer League Structure:

- For Summer League, we came up with a structure that is much more casual, fun, and less rigid than a real tournament structure for the summer
- With an extended schedule, you can play as many or as few matches as you wish!

6 Weeks of Group Matches Play for Summer League:

- Play as many matches over the first 6 weeks of the event. Play as much, or as little, as you like & score points!
- It's very much up to the players how much they want to play!



FOUR HORSEMEN OLD SCHOOL MAGIC



T22 SUMMER LEAGUE OVERVIEW

Players Can Brew and Play Multiple Different Decks:

- Feel free to try our different brews
- Play as many different games and decks and players or as few as you like!
- It's a laid back summer vibe, where we also encourage "Jank" and out of left field, odd ball deck brews! Try out some funky combos!
- Switch decks between matches as often as you wish.
- Play the best of 3 games for a match with a deck before switching.

Summer League Points:

- Players receive 1 point per match played (best of 3 games) and an additional 2 points per each match won.
- Both players receive 1 point for playing, and winner receives 2 extra points for 3 points total.
- The Top 8 players at the end of the Summer will proceed to the Quarter Finals starting Aug 16



FOUR HORSEMEN OLD SCHOOL MAGIC



T22 SUMMER LEAGUE GROUP MATCH RESULTS

Player	Matches Played	Won	Lost	Win %	Total Points
Jack Clegg	36	27	9	75.00%	90
Rasmus Tinglev Pindstrup	34	16	18	47.06%	66
Chadster Junior	24	15	9	62.50%	54
Chris Barnes	26	13	13	50.00%	52
Tim Kincaid	19	16	3	84.21%	51
Jim Rice	28	10	18	35.71%	48
Luke Raven	27	10	17	37.04%	47
Travis Smith	28	9	19	32.14%	46
Giacomo Fiore	24	4	20	16.67%	32
Fran Alvar	12	7	5	58.33%	26
Daniel Colonari	13	6	7	46.15%	25
Derrick Sailer	7	4	3	57.14%	15

Player	Matches Played	Won	Lost	Win %	Total Points
Miles S. Brown	7	4	3	57.14%	15
Christian Schreiber	7	3	4	42.86%	13
Terry Philip Hutchings	4	4	0	100.00%	12
Virgilio Dominguez Estevez	4	3	1	75.00%	10
Theis Kehlet Nielsen	3	3	0	100.00%	9
Lucas Santos	3	2	1	66.67%	7
Simon Willert Madsen	3	1	2	33.33%	5
Michael Thorborg Larsen	2	1	1	50.00%	4
William Lyth	2	1	1	50.00%	4
Erik Thorsbjerg	3	0	3	0.00%	3
Harvey Nazareno Bunda	2	0	2	0.00%	2



FOUR HORSEMEN OLD SCHOOL MAGIC



T22 SUMMER LEAGUE GROUP MATCH STATS

T22 Summer League Players:	23
Total Group Matches Played:	318
Avg. Number of Matches Played During Group Stage:	14
Top 8 Players Avg. Number of Matches Played	28
Most Matches Played During Group Matches(Jack Clegg)	36
Highest Win Rate During Group Matches (Jack Clegg)	75%
Highest Win Number of Matches During Group (Tim Kincaid)	19
Highest Win % During Group Matches (Tim Kincaid)	84.21%



LUKE RAVEN



FOUR HORSEMEN OLD SCHOOL MAGIC



T22 SUMMER LEAGUE STATS

The Jim Rice suite of 4HM
tournament data links.

[Card Stats](#)
[Player Decks](#)
[Unused Cards](#)

Most played (Non Land) Main
Deck card across all tournaments

[Chain Lightning](#) - Appearing **713** times



JIM RICE



LUKE RAVEN

Most played (Non Land)
Sideboard card across all
tournaments

[Active Volcano](#) - Appearing **449** times

Top 10 (Non Land) cards across
all tournaments



[Chain Lightning](#) - Appearing **713** times
[Fellwar Stone](#) - Appearing **577** times
[Triskelion](#) - Appearing **427** times
[Erhnam Djinn](#) - Appearing **373** times
[Mana Drain](#) - Appearing **329** times
[Spirit Link](#) - Appearing **303** times
[Serendib Efreet](#) - Appearing **300** times
[Sylvan Library](#) - Appearing **299** times
[Rukh Egg](#) - Appearing **295** times
[Pyrotechnics](#) - Appearing **281** times



FOUR HORSEMEN OLD SCHOOL MAGIC



T22 SUMMER LEAGUE STATS

Most played (Non Land) Main Deck card across all tourneys	<u>Chain Lightning</u> - Appearing 713 times	 JIM RICE  LUKE RAVEN
Most played (Non Land) Sideboard card across all tourneys	<u>Active Volcano</u> - Appearing 449 times	
Top 10 (Non Land) cards across all tourneys	<u>Chain Lightning</u> - Appearing 713 times <u>Fellwar Stone</u> - Appearing 577 times <u>Triskelion</u> - Appearing 427 times <u>Erhnam Djinn</u> - Appearing 373 times <u>Mana Drain</u> - Appearing 329 times <u>Spirit Link</u> - Appearing 303 times <u>Serendib Efreet</u> - Appearing 300 times <u>Sylvan Library</u> - Appearing 299 times <u>Rukh Egg</u> - Appearing 295 times <u>Pyrotechnics</u> - Appearing 281 times	
4HM Cards not yet played in uploaded Tournament data	124 of the total 630 card pool (this excludes the banned cards & includes duel lands & basic lands). This means there are still 19.7% untried cards within the format! Which Argivian Archaeologist's amongst us will uncover the next hidden gem of 4HM!	

JIM RICE

LUKE RAVEN



FOUR HORSEMEN OLD SCHOOL MAGIC



T22 SUMMER LEAGUE TOP 8 SEEDS

Player	Matches Played	Won	Lost	Win %	Total Points
Jack Clegg	36	27	9	75.00%	90
Rasmus Tinglev Pindstrup	34	16	18	47.06%	66
Chadster Junior	24	15	9	62.50%	54
Chris Barnes	26	13	13	50.00%	52
Tim Kincaid	19	16	3	84.21%	51
Jim Rice	28	10	18	35.71%	48
Luke Raven	27	10	17	37.04%	47
Travis Smith	28	9	19	32.14%	46
Giacomo Fiore	24	4	20	16.67%	32
Fran Alvar	12	7	5	58.33%	26
Daniel Colonari	13	6	7	46.15%	25
Derrick Sailer	7	4	3	57.14%	15



Jack Clegg

SEED 1

RANK 1

GROUP A



Rasmus Pindstrup

SEED 2

RANK 2

GROUP A



Chadster

SEED 3

RANK 3

GROUP A



chris barnes

SEED 4

RANK 4

GROUP A



Tim Kincaid

SEED 5

RANK 5

GROUP A



schmakt (jim rice)

SEED 6

RANK 6

GROUP A



Luke Raven

SEED 7

RANK 7

GROUP A



Travis Smith

SEED 8

RANK 8

GROUP A





FOUR HORSEMEN OLD SCHOOL MAGIC



Playoffs

Group A ▾

Playoffs

Filter pairings



Quarterfinals

	Jack Clegg		SEED 1
	Travis Smith		SEED 8
	chris barnes		SEED 4
	Tim Kincaid		SEED 5
	Rasmus Pindstrup		SEED 2
	Luke Raven		SEED 7
	Chadster		SEED 3
	schmakt (jim rice)		SEED 6

Semifinals

	Jack Clegg		SEED 1
	Tim Kincaid		SEED 5
	Rasmus Pindstrup		SEED 2
	Chadster		SEED 3

Finals

	Tim Kincaid	SEED 5
	Chadster	SEED 3



FOUR HORSEMEN OLD SCHOOL MAGIC



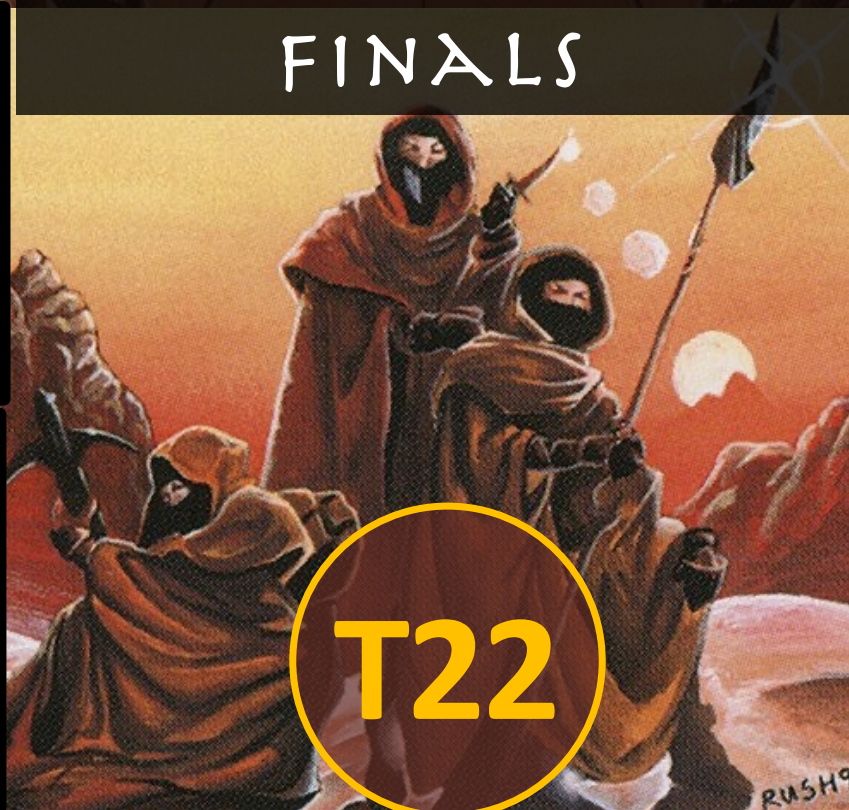
FINALS

T22

LAND TAX UNRESTRICTED

VS

RUG ARABIAN AGGRO





FOUR HORSEMEN OLD SCHOOL MAGIC



T22

CHADSTER – RUG ARABIAN AGGRO

T22





FOUR HORSEMEN OLD SCHOOL MAGIC



T22

TIM KINKAID – LAND TAX, UNRESTRICTED

T22





FOUR HORSEMEN OLD SCHOOL MAGIC



FINALS LIVE



BRIAN WEISSMAN



JOHN EKLEBERRY

HOSTS & LIVE COMMENTATORS



LAND TAX UNRESTRICTED VS RUG ARABIAN AGGRO



FOUR HORSEMEN OLD SCHOOL MAGIC



FINALS

T22



FOURHORSEMENMAGIC.COM

FACEBOOK.COM/GROUPS/FOURHORSEMENMTG



FOUR HORSEMEN OLD SCHOOL MAGIC



FOURHORSEMENMAGIC.COM



FACEBOOK.COM/GROUPS/FOURHORSEMENMTG

